

# EXHIBIT E1

## PRELIMINARY PLANS

TITLE	PAGE
Demolition Plan .....	E1.1
Proposed Pond Site Plan.....	E1.2
Pond Plan.....	E1.3
Spawning Building 1 <sup>st</sup> Floor Plan .....	E1.4
Spawning Building 2 <sup>nd</sup> Floor Plan.....	E1.5
Process Flow Diagram.....	E1.6
Existing Main Supply Line Plan & Profile - Lower.....	E1.7
Existing Main Supply Line Plan & Profile - Upper.....	E1.8
Proposed Pond Supply & Discharge Plan & Profile.....	E1.9

PRELIMINARY, NOT FOR CONSTRUCTION

**Oregon**  
 DEPARTMENT OF FISH AND WILDLIFE  
 FISH DIVISION  
 ENGINEERING SECTION  
 3406 CHERRY AVE. N.E.  
 SALEM, OREGON 97303  
 PHONE: (503) 947-6222 FAX: (503) 947-6203



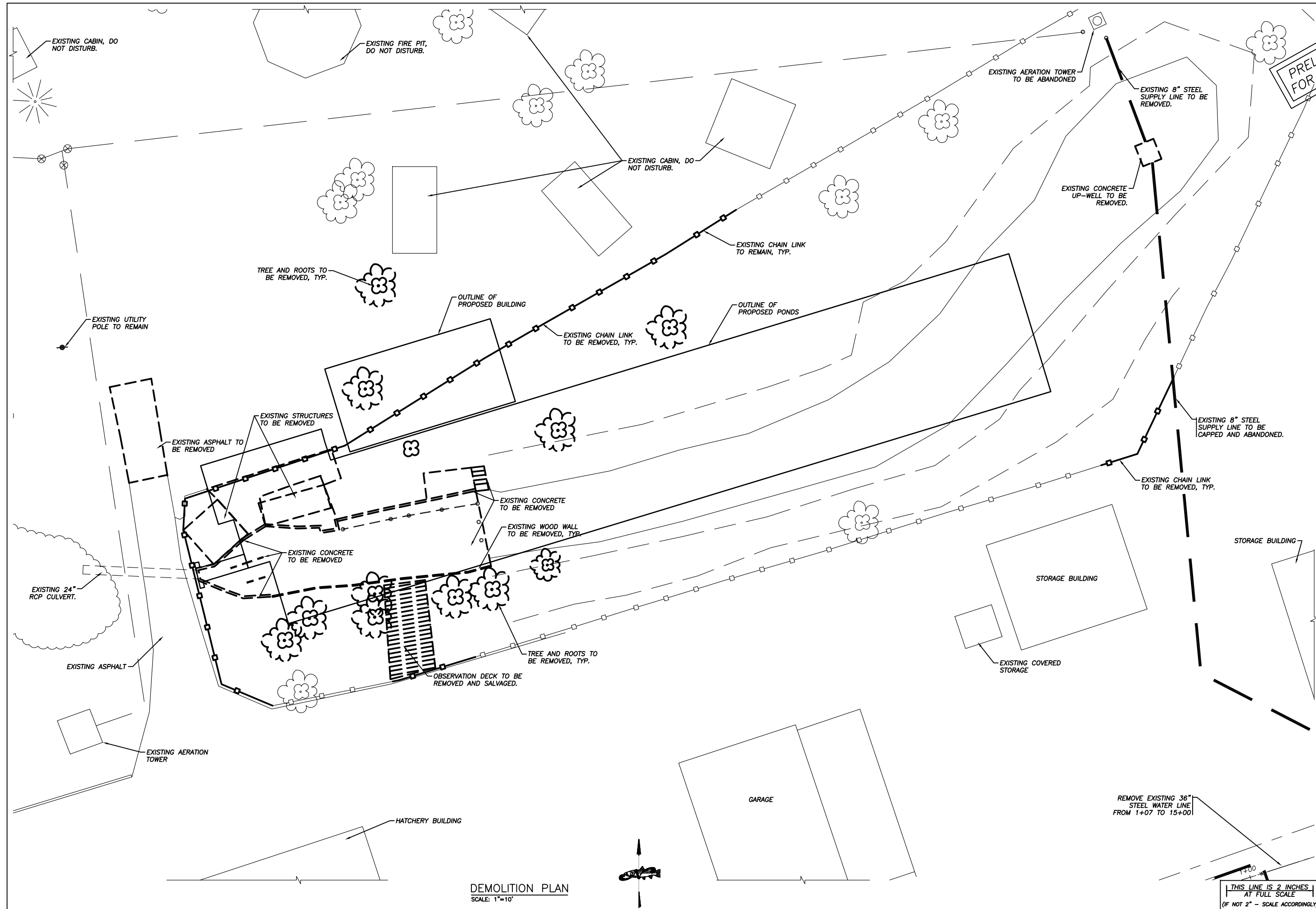
REV.	DATE	DESCRIPTION

**WILLAMETTE HATCHERY  
 BROODSTOCK HOLDING POND  
 IMPROVEMENTS  
 DEMOLITION PLAN**

DATE: JULY 2012  
 DESIGN BY: DDC  
 DRAWN BY: DDC  
 CHECKED BY: DHS

CHIEF ENGINEER  
 FILE NO. 10-031

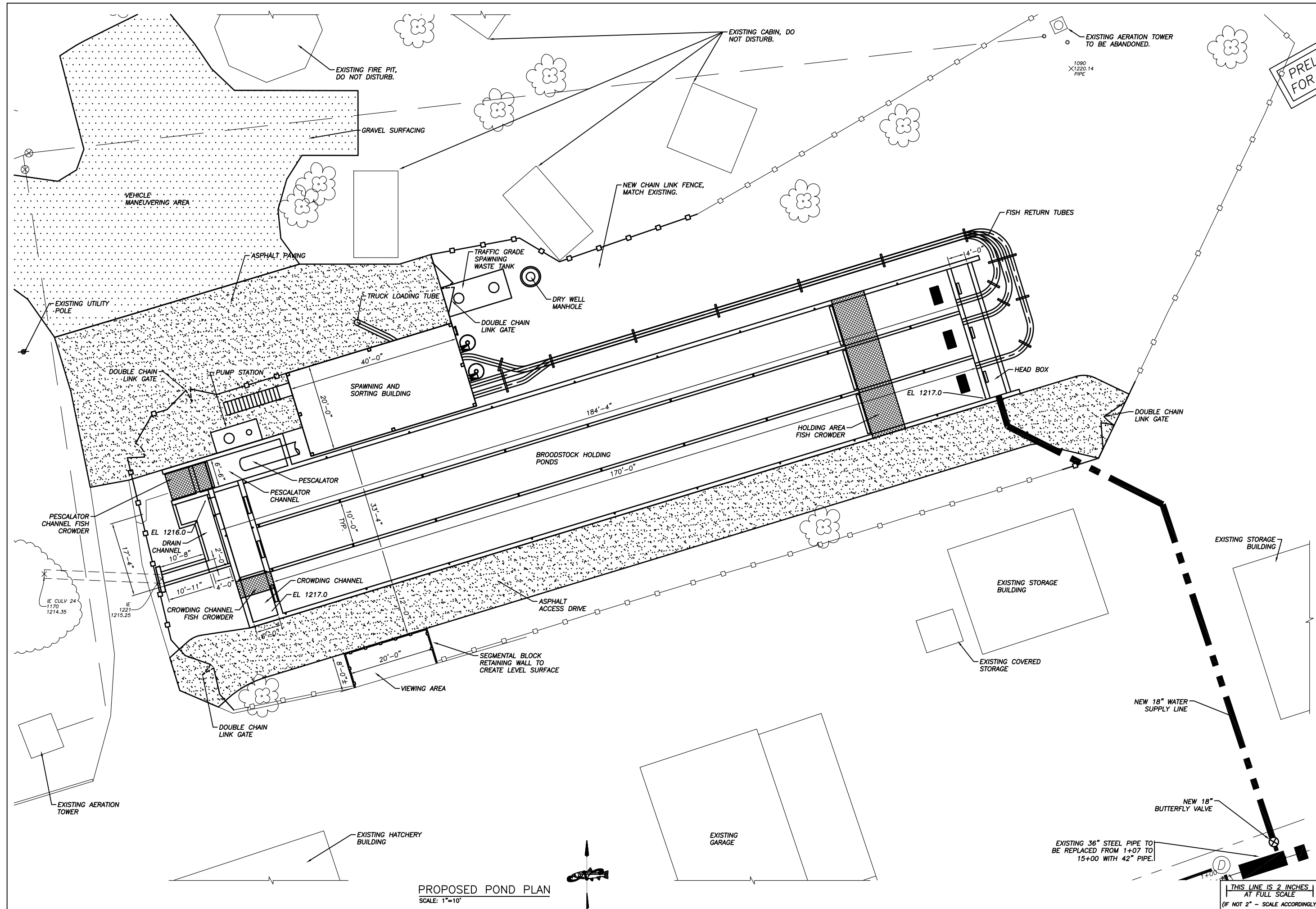
SHEET **E1.1**  
 OF



DEMOLITION PLAN  
 SCALE: 1"=10'



THIS LINE IS 2 INCHES AT FULL SCALE  
 (IF NOT 2" - SCALE ACCORDINGLY)



**PRELIMINARY, NOT FOR CONSTRUCTION**

**Oregon**  
 DEPARTMENT OF FISH AND WILDLIFE  
 FISH DIVISION  
 ENGINEERING SECTION  
 3406 CHERRY AVE. N.E.  
 SALEM, OREGON 97303  
 PHONE: (503) 947-6222 FAX: (503) 947-6203

REV.	DATE	DESCRIPTION

**WILLAMETTE HATCHERY  
 BROODSTOCK HOLDING POND  
 IMPROVEMENTS  
 PROPOSED POND SITE PLAN**

DATE: JULY 2012  
 DESIGN BY: DDC  
 DRAWN BY: DDC  
 CHECKED BY: DHS

CHIEF ENGINEER  
 FILE NO. 10-031

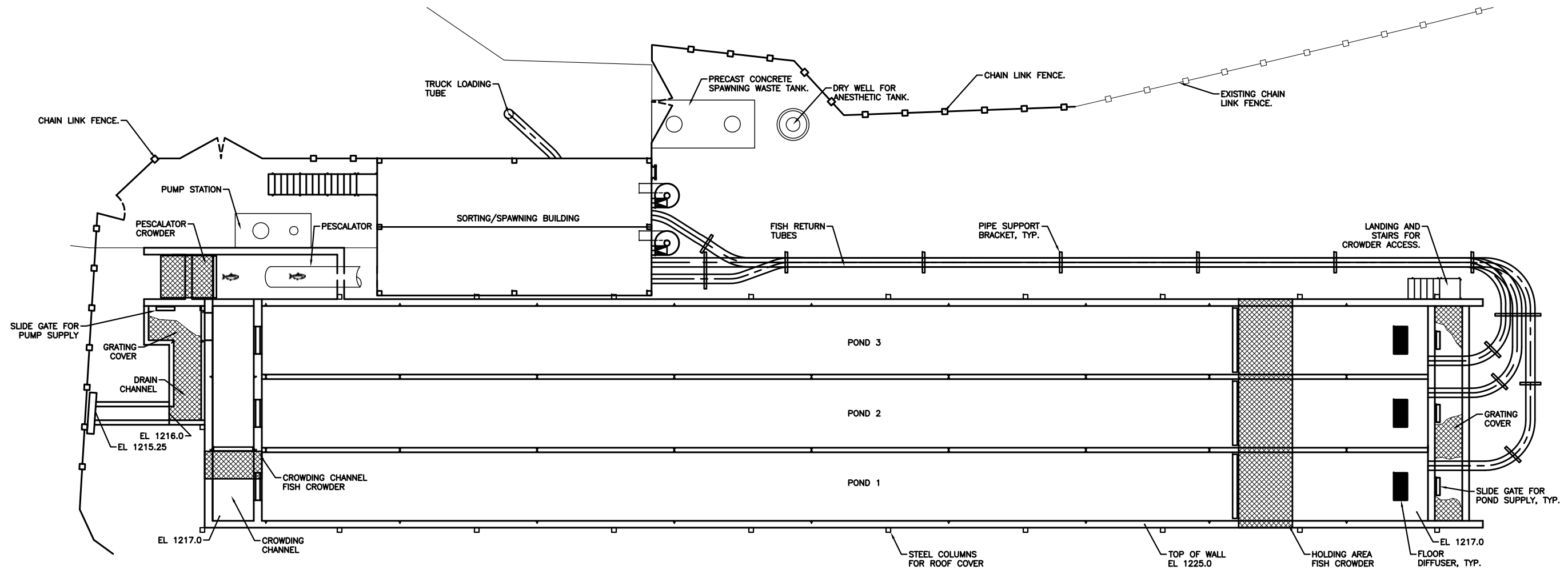
SHEET **E1.2**  
 OF

**PROPOSED POND PLAN**  
 SCALE: 1"=10'

THIS LINE IS 2 INCHES AT FULL SCALE  
 (IF NOT 2" - SCALE ACCORDINGLY)

PRELIMINARY, NOT FOR CONSTRUCTION

**Oregon**  
 DEPARTMENT OF FISH AND WILDLIFE  
 FISH DIVISION  
 ENGINEERING SECTION  
 3406 CHERRY AVE. N.E.  
 SALEM, OREGON 97303  
 PHONE: (503) 947-6222 FAX: (503) 947-6203



**POND PLAN**  
 SCALE: 1/8"=1'-0"

REV.	DATE	DESCRIPTION

**WILLAMETTE HATCHERY  
 BROODSTOCK HOLDING POND  
 IMPROVEMENTS  
 POND PLAN**

DATE: JULY2012  
 DESIGN BY: DDC  
 DRAWN BY: DDC  
 CHECKED BY: DHS

CHIEF ENGINEER

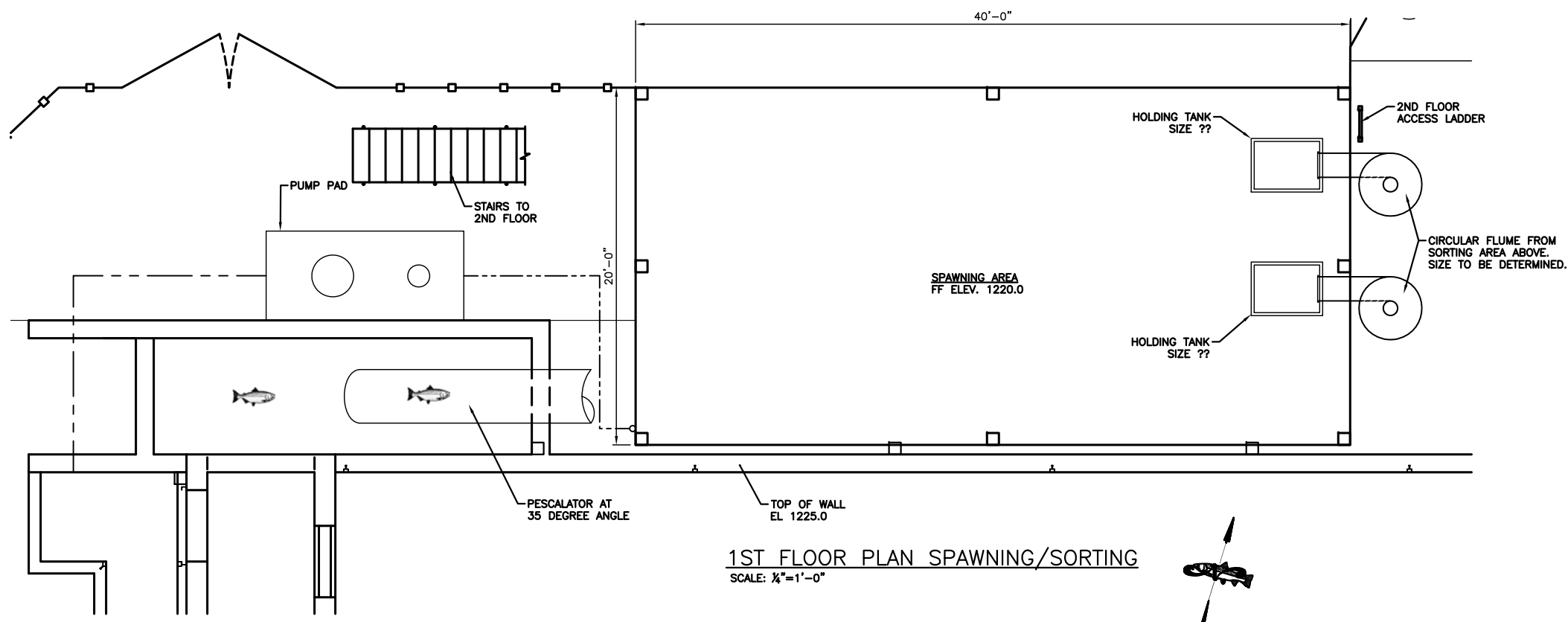
FILE NO. 10-031

THIS LINE IS 2 INCHES AT FULL SCALE (IF NOT 2" - SCALE ACCORDINGLY)

SHEET **E1.3** OF

PRELIMINARY, NOT FOR CONSTRUCTION

**Oregon**  
 DEPARTMENT OF FISH AND WILDLIFE  
 FISH DIVISION  
 ENGINEERING SECTION  
 3406 CHERRY AVE. N.E.  
 SALEM, OREGON 97303  
 PHONE: (503) 947-6222 FAX: (503) 947-6203



1ST FLOOR PLAN SPAWNING/SORTING  
 SCALE: 1/4"=1'-0"



REV.	DATE	DESCRIPTION

WILLAMETTE HATCHERY  
 BROODSTOCK HOLDING POND  
 IMPROVEMENTS  
 SPAWNING BUILDING 1ST FLOOR PLAN

DATE: JULY 2012  
 DESIGN BY: DDC  
 DRAWN BY: DDC  
 CHECKED BY: DHS

CHIEF ENGINEER

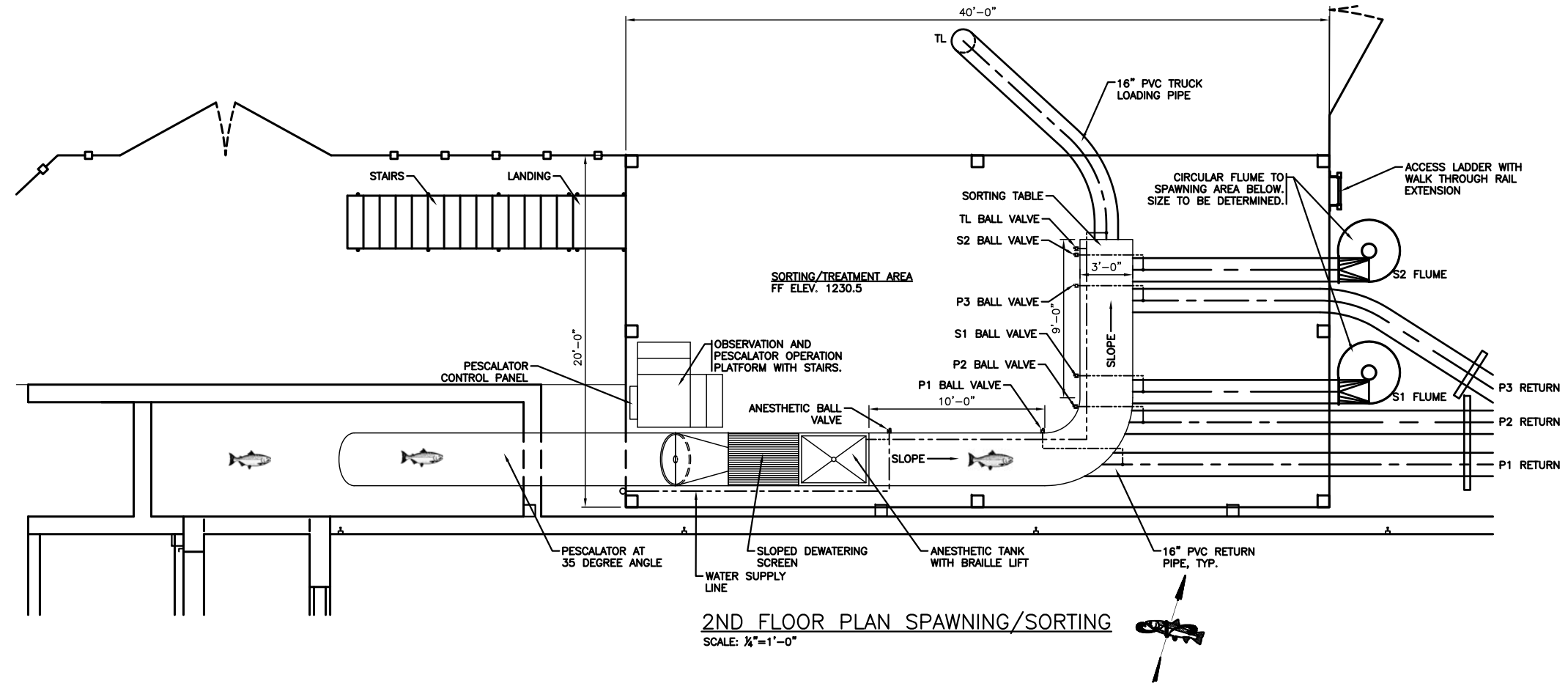
FILE NO. 10-031

THIS LINE IS 2 INCHES  
 AT FULL SCALE  
 (IF NOT 2" - SCALE ACCORDINGLY)

SHEET **E1.4**  
 OF

PRELIMINARY, NOT FOR CONSTRUCTION

**Oregon**  
 DEPARTMENT OF FISH AND WILDLIFE  
 FISH DIVISION  
 ENGINEERING SECTION  
 3406 CHERRY AVE. N.E.  
 SALEM, OREGON 97303  
 PHONE: (503) 947-6222 FAX: (503) 947-6203



**2ND FLOOR PLAN SPAWNING/SORTING**  
 SCALE: 1/4"=1'-0"

REV.	DATE	DESCRIPTION

**WILLAMETTE HATCHERY  
 BROODSTOCK HOLDING POND  
 IMPROVEMENTS  
 SPAWNING BUILDING 2ND FLOOR PLAN**

DATE: JULY 2012  
 DESIGN BY: DDC  
 DRAWN BY: DDC  
 CHECKED BY: DHS

CHIEF ENGINEER  
 FILE NO. 10-031

THIS LINE IS 2 INCHES AT FULL SCALE (IF NOT 2" - SCALE ACCORDINGLY)

SHEET **E1.5** OF

PRELIMINARY, NOT FOR CONSTRUCTION

Oregon  
 DEPARTMENT OF FISH AND WILDLIFE  
 FISH DIVISION  
 ENGINEERING SECTION  
 3406 CHERRY AVE. N.E.  
 SALEM, OREGON 97303  
 PHONE: (503) 947-6222 FAX: (503) 947-6203



REV.	DATE	DESCRIPTION

WILLAMETTE HATCHERY  
 BROODSTOCK HOLDING POND  
 IMPROVEMENTS  
 PROCESS FLOW DIAGRAM

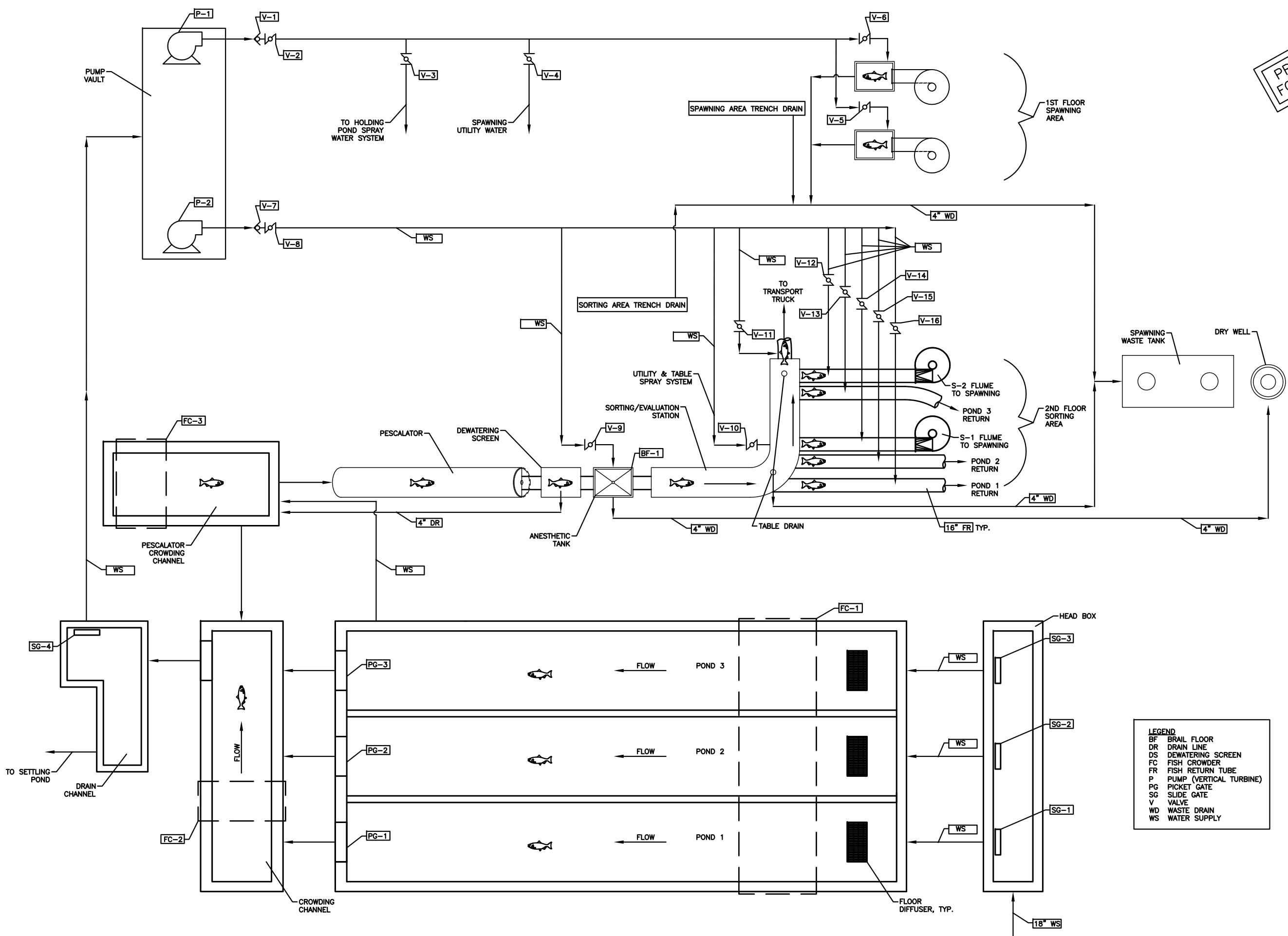
DATE: JULY 2012  
 DESIGN BY: DDC  
 DRAWN BY: DDC  
 CHECKED BY: DHS

CHIEF ENGINEER

FILE NO. 10-031

SHEET E1.6

OF



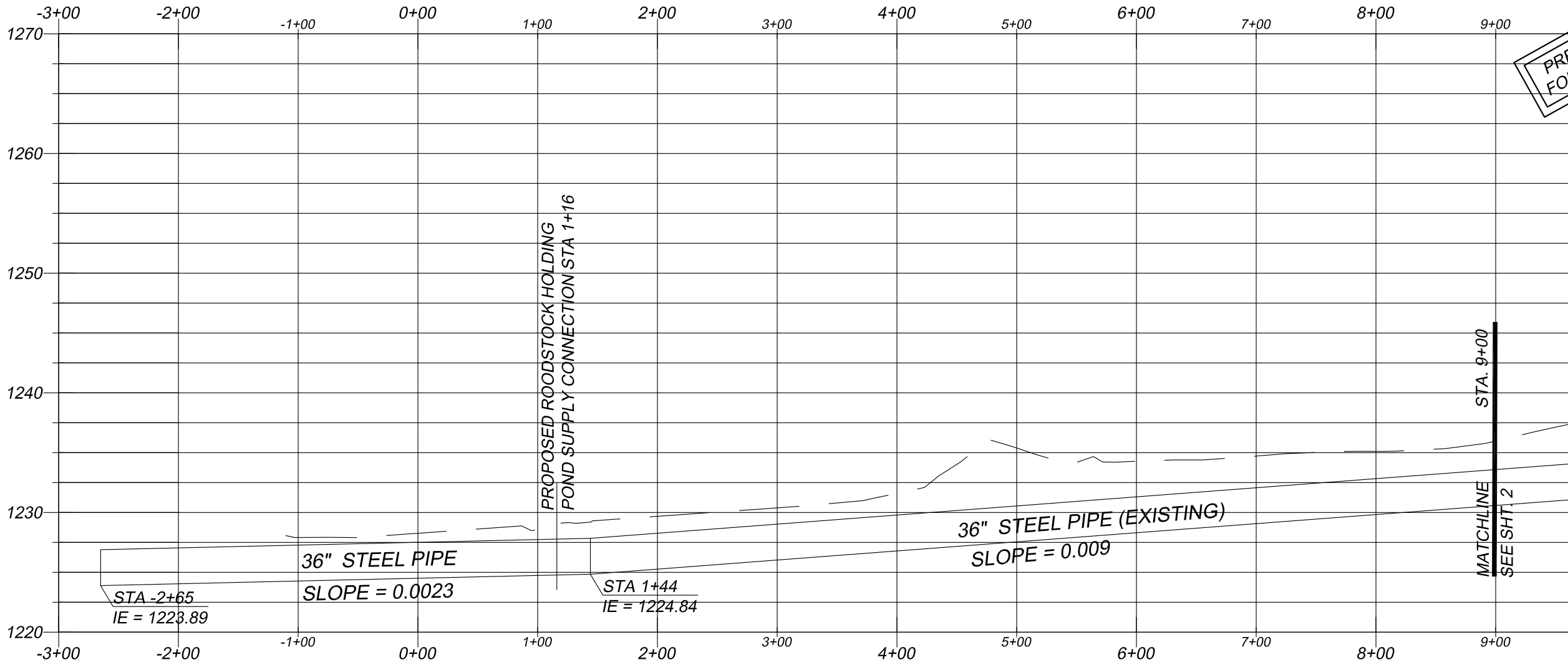
LEGEND

BF	BRAIL FLOOR
DR	DRAIN LINE
DS	DEWATERING SCREEN
FC	FISH CROWDER
FR	FISH RETURN TUBE
PG	PICKET GATE
P	PUMP (VERTICAL TURBINE)
SG	SLIDE GATE
V	VALVE
WD	WASTE DRAIN
WS	WATER SUPPLY

PROCESS FLOW DIAGRAM  
 SCALE: N.T.S.

PRELIMINARY, NOT FOR CONSTRUCTION

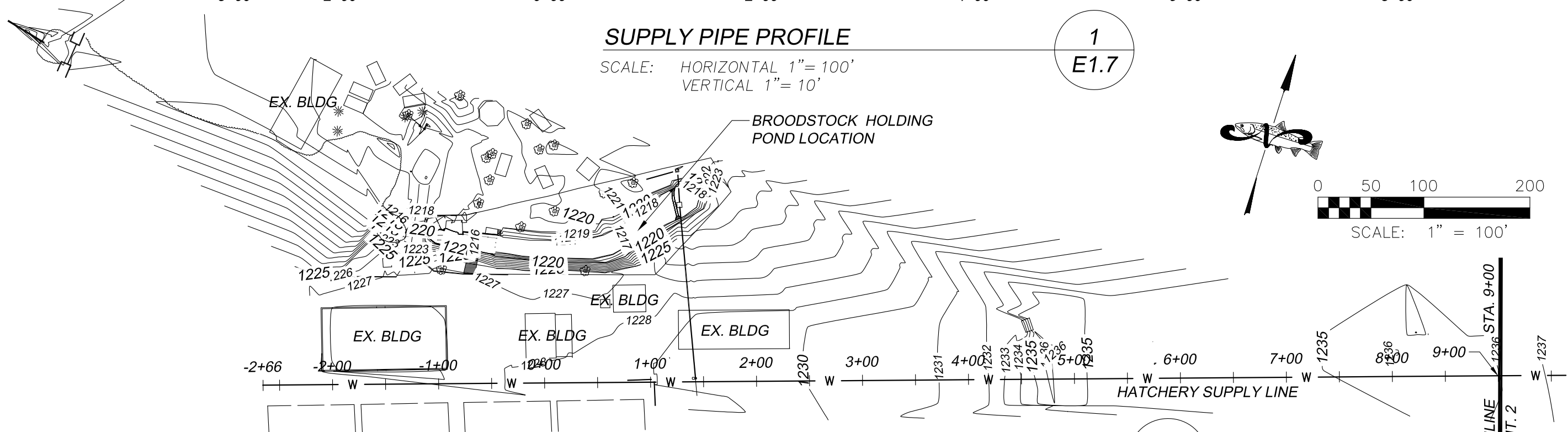
**Oregon**  
 DEPARTMENT OF FISH AND WILDLIFE  
 FISH DIVISION  
 ENGINEERING SECTION  
 3406 CHERRY AVE. N.E.  
 SALEM, OREGON 97303  
 PHONE: (503) 947-6222 FAX: (503) 947-6203



**SUPPLY PIPE PROFILE**

SCALE: HORIZONTAL 1" = 100'  
 VERTICAL 1" = 10'

1  
E1.7



**SUPPLY PIPE PLAN - LOWER (SALMON SIDE)**

SCALE: 1" = 100'

2  
E1.7

REV.	DATE	DESCRIPTION

**WILLAMETTE FISH HATCHERY**  
**BROODSTOCK HOLDING POND**  
**EXISTING SUPPLY LINE**  
**PLAN & PROFILE - LOWER**

DATE: JULY 2012  
 DESIGN BY:  
 DRAWN BY: PAB  
 CHECKED BY: DHS

CHIEF ENGINEER  
 FILE NO. 10-031  
 SHEET **E1.7**  
 OF



PRELIMINARY, NOT FOR CONSTRUCTION

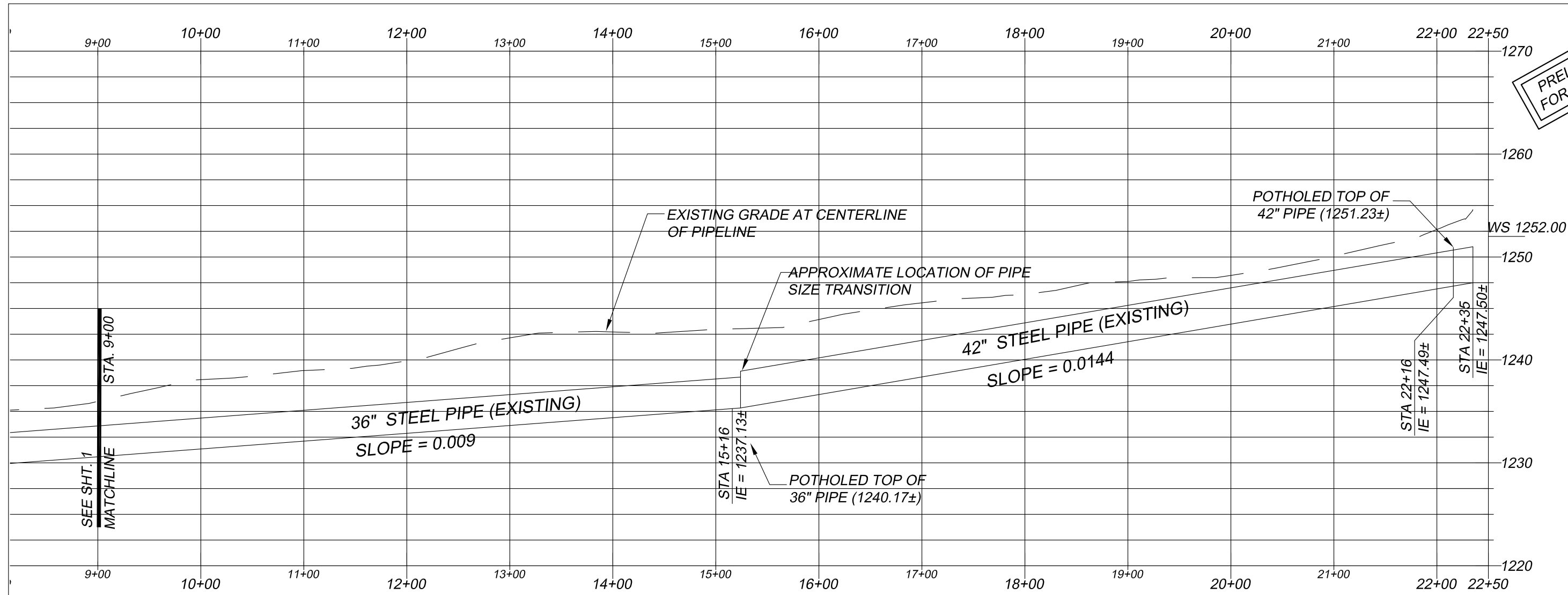
**Oregon**  
 DEPARTMENT OF FISH AND WILDLIFE  
 FISH DIVISION  
 ENGINEERING SECTION  
 3406 CHERRY AVE. N.E.  
 SALEM, OREGON 97303  
 PHONE: (503) 947-6222 FAX: (503) 947-6203

REV.	DATE	DESCRIPTION

**WILLAMETTE FISH HATCHERY**  
**BROODSTOCK HOLDING POND**  
**EXISTING SUPPLY LINE**  
**PLAN & PROFILE - UPPER**

DATE: JULY 2012  
 DESIGN BY:  
 DRAWN BY: PAB  
 CHECKED BY: DHS

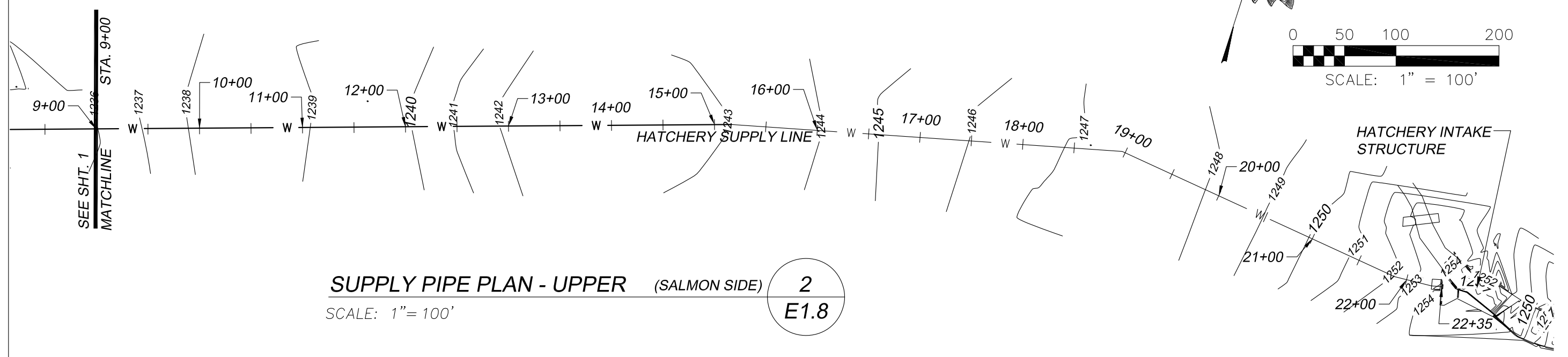
CHIEF ENGINEER  
 FILE NO. 10-031  
 SHEET **E1.8**  
 OF



**SUPPLY PIPE PROFILE**

SCALE: HORIZONTAL 1" = 100'  
 VERTICAL 1" = 10'

1  
**E1.8**



**SUPPLY PIPE PLAN - UPPER (SALMON SIDE)**

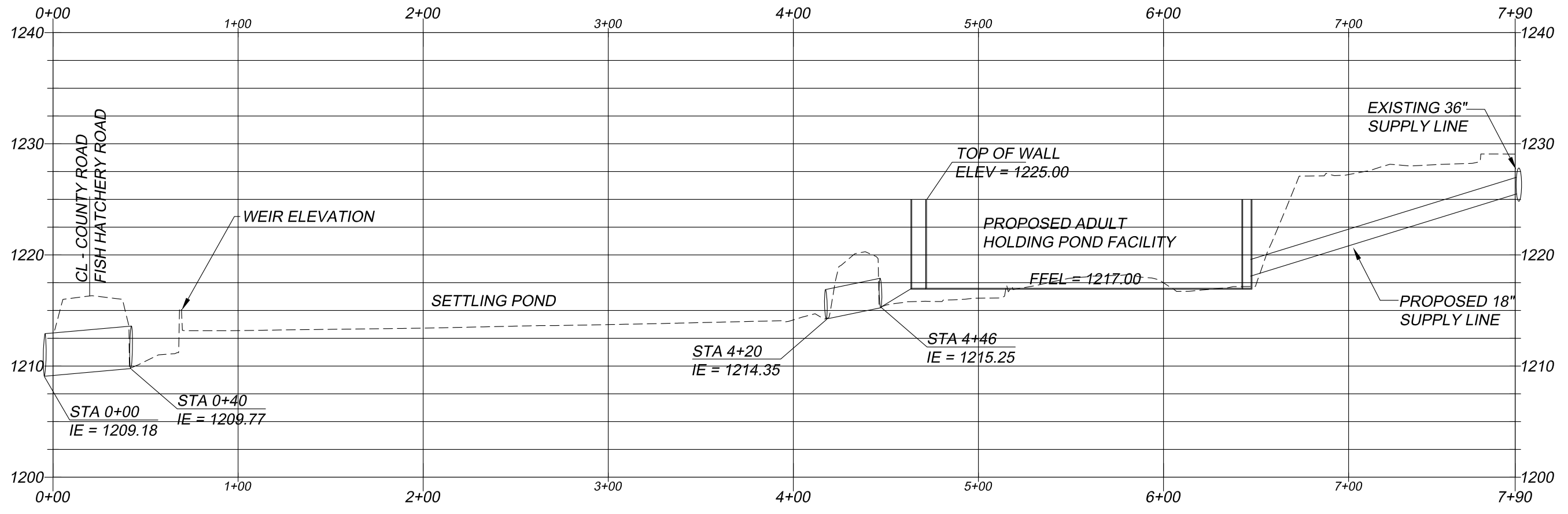
SCALE: 1" = 100'

2  
**E1.8**

**PRELIMINARY, NOT FOR CONSTRUCTION**

**Oregon**  
 DEPARTMENT OF FISH AND WILDLIFE  
 FISH DIVISION  
 ENGINEERING SECTION  
 3406 CHERRY AVE. N.E.  
 SALEM, OREGON 97303  
 PHONE: (503) 947-6222 FAX: (503) 947-6203

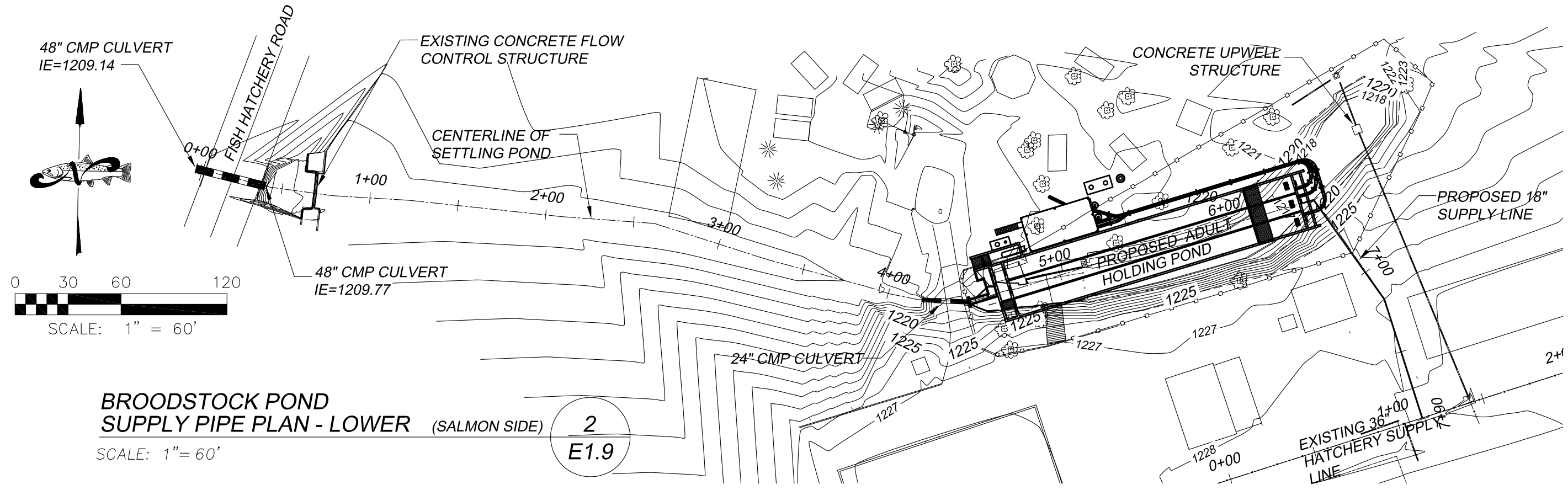
REV.	DATE	DESCRIPTION



**BROODSTOCK POND SUPPLY PIPE PROFILE**

SCALE: HORIZONTAL 1" = 60'  
 VERTICAL 1" = 10'

**1**  
**E1.9**



**BROODSTOCK POND SUPPLY PIPE PLAN - LOWER (SALMON SIDE)**

SCALE: 1" = 60'

**2**  
**E1.9**

**WILLAMETTE FISH HATCHERY**  
**BROODSTOCK HOLDING POND**  
**PROPOSED POND SUPPLY & DISCHARGE**  
**PLAN & PROFILE - UPPER**

DATE: JULY 2012  
 DESIGN BY:  
 DRAWN BY: PAB  
 CHECKED BY: DHS

CHIEF ENGINEER  
 FILE NO. 10-031

SHEET **E1.9**  
 OF